

RED OAK-TALIHINA

TRANSMISSION LINE REBUILD PROJECT

Public Service Company of Oklahoma (PSO) representatives plan to upgrade the local electric transmission grid in Latimer and Le Flore counties. The Red Oak-Talihina Transmission Line Rebuild Project involves upgrading about 15 miles of electric transmission line to enhance electric reliability for area customers.

WHAT

The project involves:

- Rebuilding about 15 miles of 69-kilovolt transmission line between the Red Oak and Talihina (WFEC) substations
- Making minor upgrades to area substations

WHY

Project benefits:

- Improves electric reliability for customers by upgrading line capacity
- Replaces aging wooden poles from the 1970s with modern steel poles to reduce maintenance frequency and strengthen the line against severe weather impacts
- Upgrades wires and substation equipment to reduce the likelihood of larger, community-sustained outages

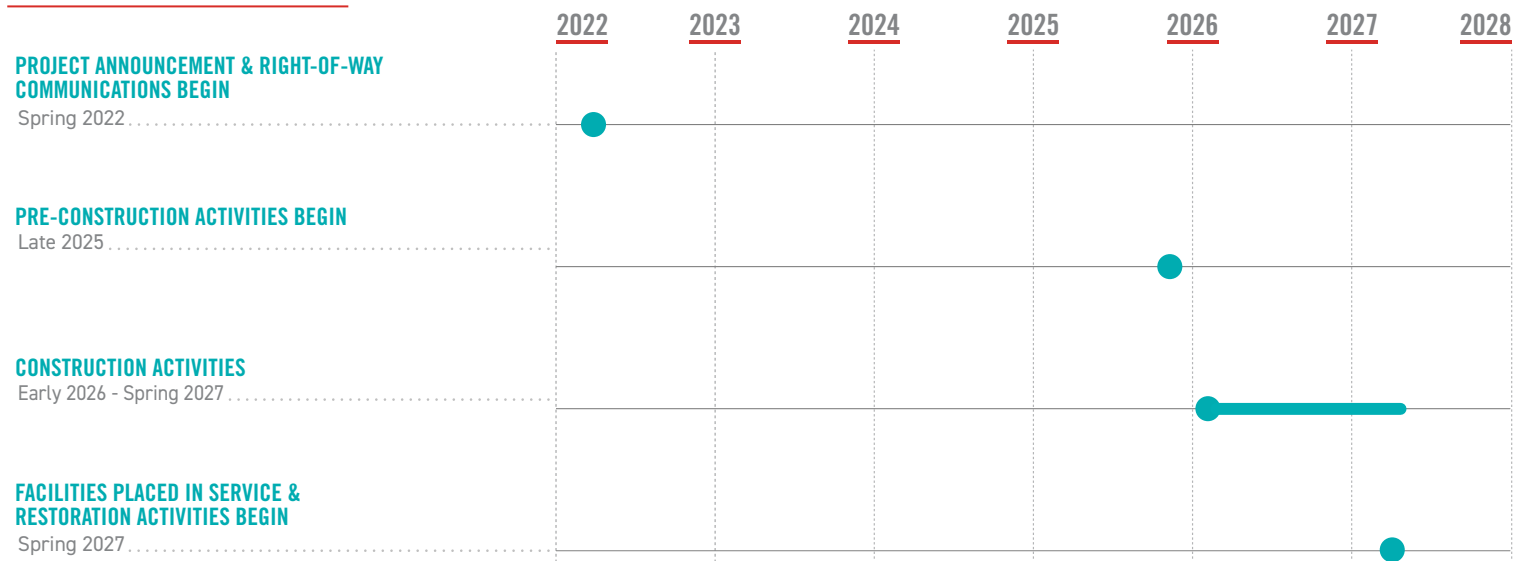
WHERE

- The Red Oak Substation is in Red Oak off Northeast Maple Street and North First Street
- The Talihina (WFEC) Substation is located about a mile southwest of Talihina off County Road 269

The project area includes:

- City of Red Oak
- City of Talihina
- Latimer County
- Le Flore County

PROJECT SCHEDULE



*Timeline subject to change

TYPICAL STRUCTURES

Structure Height:

*Approximately 75 feet

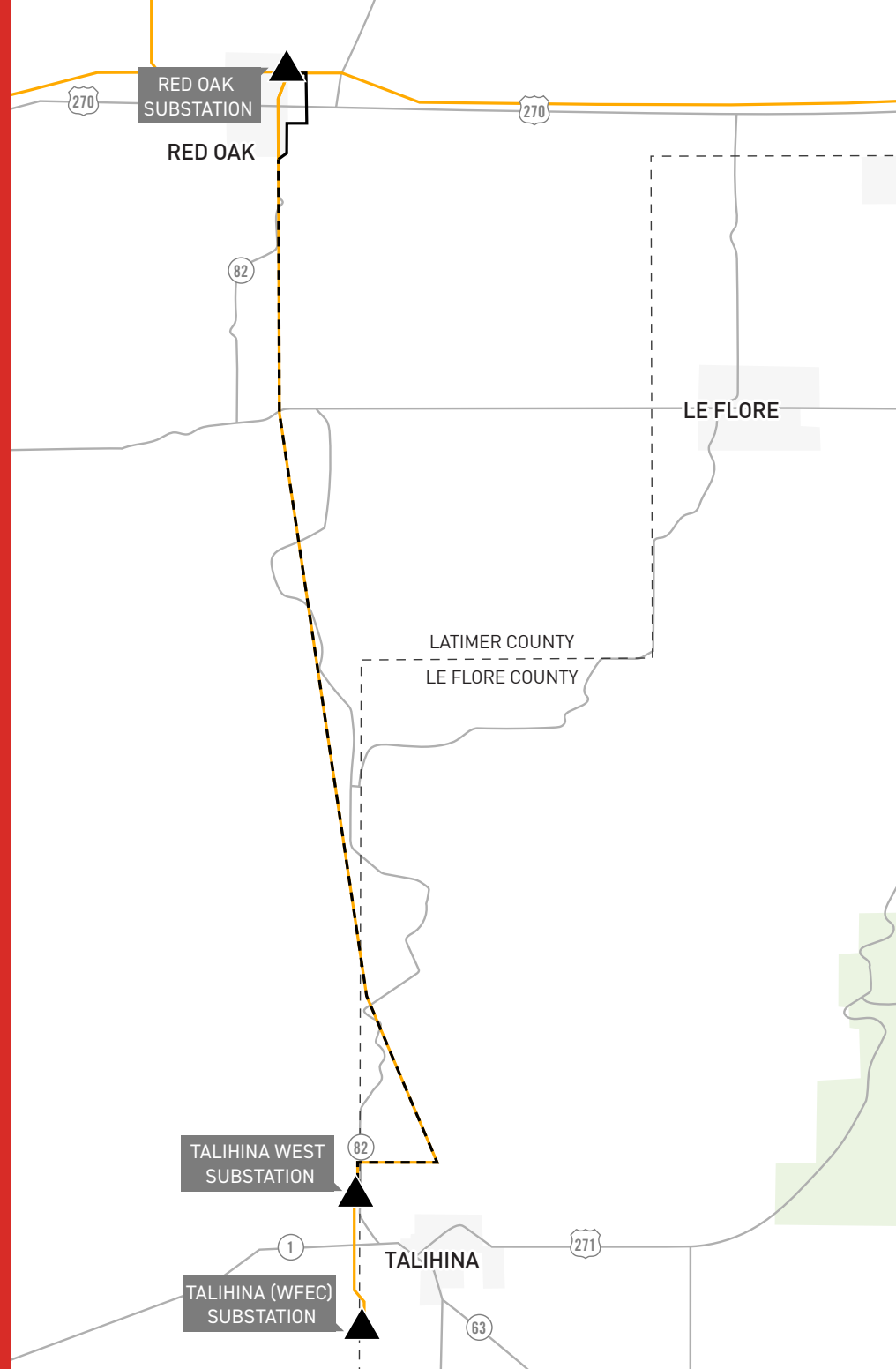
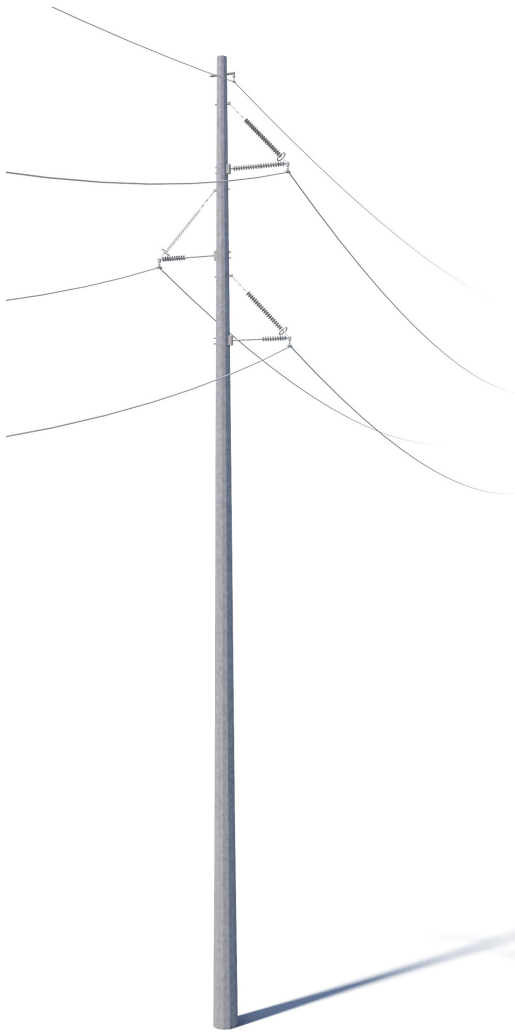
Right-of-Way Width:

*100 feet

Distance Between Structures:

*Approximately 600 feet

*Exact structure, height and right-of-way requirements may vary



RED OAK-TALIHINA TRANSMISSION LINE REBUILD PROJECT

- EXISTING TRANSMISSION LINE
- - - TRANSMISSION LINE TO BE REBUILT
- ▲ EXISTING SUBSTATION
- TRANSMISSION LINE TO BE RELOCATED



PSO VALUES YOUR INPUT ABOUT THIS PROJECT. PLEASE SEND COMMENTS AND QUESTIONS TO:

MATTHEW HAMES

Project Outreach Specialist

918-237-6736

mchames@aep.com

PSOklahoma.com/RedOak-Talihina

